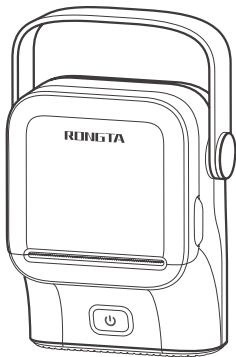


R22

Smart Label Printer

Quick Installation Guide



01. Download APP

- 1 Search for "RLabel" APP in Google Play or APP Store.
- 2 Scan the QR code below to download the APP.



"RLabel" APP

 More product instructions can be found in the downloaded APP.

 APP homepage ▶  Mine ▶  Beginners Guide

Customer Service:



Email: support@rongtatech.com



WhatsApp: +86 18150368963

Available time:

Mon-Fri 9AM-5PM (EST)



Contact us on WhatsApp

02. Packing list



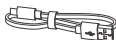
❶ Label Printer



❷ Quick Installation Guide



❸ APP User Guide



❹ USB Cable



❺ Label paper (trial)

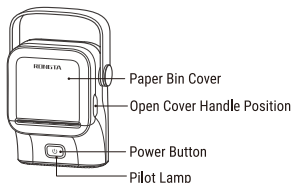


Note:

If the NFC is not in the illustrated position ❺, using your finger pass through the paper roll core, press out the NFC sticker cover (core cap), and install it to the correct position (as the picture ❺ show).

For best print experience, we suggest using Rongta NFC Labels.
Get R22 label tapes on "RLabel" App: "shopping cart" or "R22 Banner"

03. Product description



Key function description

Scene Mode	Key Operation	Corresponding Function
Power Off	Hold down for 3 seconds	Power on
Power on	Hold down for 3 seconds	Power off
Bide one's time	Press it once	Print preset function
Bide one's time	Press twice consecutively	Label Learn

Indicator description

Indicator Status	Status Declaration	
White light on	Normal standby	
The green light is on.	Bluetooth connected	
The red light is steady on.	Charge below 20%	
The white light is blinking slowly	Charging	
White light flashing	Firmware upgrading	
Green flashing	Printing	
Red light flashing	Sync with buzzer alarm	
Buzzer alarm prompt (commonly used)	Two tones	Uncap
	Three-tone	Paper out
	Four-tone	Seam marking error
	Five-tone	Overheat error
	Six-tone	Movement error

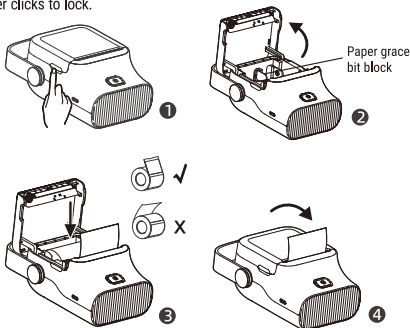
04. Operation instructions

Quick steps:

Install the paper roll → Power on → Download APP
→ Connect APP to edit and print

Install the paper roll

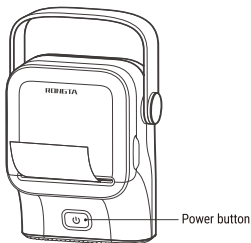
1. Hold the handles on both sides of the upper cover and lift up to open the upper cover of the printer (as shown in Figure 1 and Figure 2 below).
2. Open the paper grace block, put the label print side down into the paper bin (as shown in Figure 3 below), and pull out the front end of the first paper for about 1cm.
3. Close the upper cover of the printer and gently press down until the upper cover clicks to lock.



Please double check the NFC clips on correct side (as the picture show), if no, please kindly push out the NCF clips and change to the correct side (as picture show).

Power on

Press and hold the power button for 3 seconds to power on.



 Note:

1. If it cannot be turned on, please charge it for 1 hour.
2. Matching label paper: Double-click the power button to learn the label.




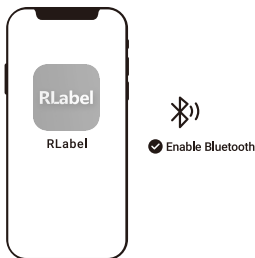
Note

If a power adapter is used for charging, a 5V/1A output adapter is recommended

Connect APP to edit and print

- 1 After the APP is downloaded, make sure that the Bluetooth of the mobile phone is turned on.

 **Note:** Android phones need to turn on location permissions.



- 2 Open the APP and search for connected devices through Bluetooth in the app.

 **Note:** If you need a PIN code, you can enter 0000 or 1234 to confirm.

- 3 After the connection is successful, click the bottom navigation bar "+" to enter the edit.

05. Solutions to common problems

Q: What can I do if no printer is found?

- A: 1. Check whether the Bluetooth function of the mobile phone is enabled.
2. Restart the printer or APP and search again;
3. Turn off Bluetooth and turn it on again.

Q: How to solve the Bluetooth connection failure?

- A: 1. Restart the printer or APP and search again;
2. Turn off Bluetooth and turn it on again.

Q: Click to print, no content appears, the printer keeps making a "click, click" sound?

- A: 1. To check whether the label is properly placed, pull the label out of the knife edge.
2. Check whether the label is used up. If it is used up, replace it in time.

Q: How to solve the problem of sudden termination of printing?

- A: Perform operations as prompted by the APP.

Q: How to solve print offset?


- A: 1. Check whether the label paper size is consistent with the APP template;
2. The print offset can be adjusted through the APP My-MyDevice-Print Offset function.

Q: How to solve the paper anomaly?

- A: 1. Check whether labels or foreign objects are attached to the sensor in the paper bin guide slot.
2. Check whether the template size set on the APP is consistent with the actual label size;
3. Check whether the paper type of the template is incorrect.

Q: RONGTA label NFC can not detecting label size?

- A: Please kindly check if the NFC in correct position. Refer to page 02 for NFC adjustment steps.

 **Note:** The above problems can not be handled, please contact the local after-sales network or call the customer service hotline.

06. Care and maintenance

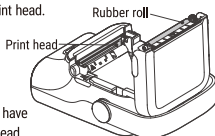
Printing head and roller cleaning

When printing occurs in any of the following situations, the print head and the roller should be cleaned

- The print is not clear;
- Paper feed, paper back noise;
- There are foreign objects stuck to the print head.

Printing head and roller cleaning steps are as follows:

1. Power off the printer;
2. Open the paper bin cover and find the print head (as shown on the right) If you have just finished printing, wait for the print head to cool completely;
3. While rotating the roller, wipe the dust and stains on the surface of the printing roller with an alcohol cotton ball (should be wrung out);
4. Use alcohol cotton ball (should be wrung out) or professional print head cleaning pen (need to be purchased separately) to wipe the dust and stains on the surface of the print head;
5. Wait for 5 to 10 minutes, after the alcohol has completely evaporated, close the paper bin lid.



Note:

1. Daily cleaning of the printer must ensure that the power is turned off;
2. Avoid touching the print head surface with hands and metal objects, and do not use tweezers and other tools to scratch the print head, print roller and sensor surface;
3. Do not use gasoline, acetone and other organic solvents to wipe the print head and rubber roller;
4. After the alcohol is completely volatilized, turn on the power to continue printing;
5. Keep the sensor surface clean.

07. Safety precautions

1. Please place the product and accessories in a safe place out of reach of children, or use them under the supervision of a guardian to prevent danger;
2. When the product fails, please turn off the power immediately;
3. If you use a power adapter to charge, you must purchase a power adapter that is safe, compliant, and meets the standard requirements;
4. Do not disassemble the product to replace the battery. Improper replacement may cause explosion danger;
5. The battery contains special protection circuits and devices, do not open the battery without authorization, otherwise it may cause short circuit or electrolyte leakage. If the electrolyte accidentally enters the eyes, rinse immediately with water and go to the hospital.
6. Do not expose the product and the power adapter to high temperature, high humidity environment or into water to avoid short circuit or cause battery heat, smoke, deformation, damage or even explosion;
7. When you find smoke or smell of the product or power adapter, remove the power adapter immediately to avoid burns.



Note: The paper knife has a sharp edge, please be careful not to touch to prevent cuts.



Warning: The print head is a hot part. Do not touch the print head and its surrounding parts during or just after printing. Children must use it under adult supervision.



Warning: Do not touch the thermal print head surface and connectors to avoid static damage to the print head.

Battery warning

- There is a risk of explosion if you change the battery pack with an incorrect model;
- Please do not put the battery into the fire or heating furnace, do not mechanically squeeze or cut the battery for disposal;
- Do not place the battery in an extremely high temperature environment that may cause the battery to explode or leak flammable liquids or gases;
- Do not place the battery in an extremely low pressure that may cause the battery to explode or leak flammable liquids and gases.

08. FCC Warning

This device complies with part 15 of the FCC Rules. Operation is subject to the following two conditions: (1) This device may not cause harmful interference, and (2) this device must accept any interference received, including interference that may cause undesired operation.

Note: This equipment has been tested and found to comply with the limits for a Class B digital device, pursuant to part 15 of the FCC Rules. These limits are designed to provide reasonable protection against harmful interference in a residential installation.

This equipment generates, uses and can radiate radio frequency energy and, if not installed and used in accordance with the instructions, may cause harmful interference to radio communications. However, there is no guarantee that interference will not occur in a particular installation.

If this equipment does cause harmful interference to radio or television reception, which can be determined by turning the equipment off and on, the user is encouraged to try to correct the interference by one or more of the following measures:

- Reorient or relocate the receiving antenna.
- Increase the separation between the equipment and receiver.
- Connect the equipment into an outlet on a circuit different from that to which the receiver is connected.
- Consult the dealer or an experienced radio/TV technician for help.

Note: The Grantee is not responsible for any changes or modifications not expressly approved by the party responsible for compliance.

such modifications could void the user's authority to operate the equipment.

The device has been evaluated to meet general RF exposure requirement.

To maintain compliance with FCC's RF exposure guidelines, the distance must be at least 20 cm between the radiator and your body, and fully supported by the operating and installation

Special instructions

The product, accessories, software interface and other illustrations in this installation guide are schematic drawings for reference only. Due to product updates and upgrades, the actual product and schematic drawings may be slightly different. Please refer to the actual product.

09. Product parameter

Item		Specification
Print	Printing Method	Direct Thermal
	Resolution	203dpi
	Max. Print Width	2"(48mm)
	Max. Print Speed	2 ips(50mm/s)
	Max. Print Length	No limit
Medium	Type	Label Paper, Continuous Paper, Black paper
	Width (Label + Backing Paper)	0.63"-2.13"(16~54mm)
	Thickness (Label + Backing Paper)	0.0023"-0.0071"(0.06mm~0.18mm)
	Max. Label Roll Diameter	50mm
Paper Cutter Method		Manual Tear-off
Charging Interface		USB(Type-C)
Communication Interface		Bluetooth
Power Adapter	Input	DC 5V/1A
	Battery	3.7V 1500mAh lithium-ion battery
	Charging Time	3.5h(0~40°C/32~104°F)
	Endurance Time	4h
Physical Parameter	Dimension (Length, Width and Height)	117.5x97.5x63mm (without leather strap)
	Weight	242g
Operating Temperature		0~40°C(32-104°F)



Rongta Technology (Xiamen) Group Co., Ltd.

ADD: No.88, Tonghui South Road, Tongan, Xiamen, China.

Email: support@rongtatech.com

WEB: www.rongtatech.com